

SPG20 Antibody (C-term)
Affinity Purified Rabbit Polyclonal Antibody (Pab)
Catalog # AP16276b

Specification

SPG20 Antibody (C-term) - Product Information

Application	WB,E
Primary Accession	Q8N0X7
Other Accession	Q8R1X6 , A0JNJ3 , NP_001135766.1 , NP_001135767.1
Reactivity	Human
Predicted	Bovine, Mouse
Host	Rabbit
Clonality	Polyclonal
Isotype	Rabbit IgG
Calculated MW	72833
Antigen Region	491-519

SPG20 Antibody (C-term) - Additional Information

Gene ID 23111

Other Names

Spartin, Spastic paraplegia 20 protein, Trans-activated by hepatitis C virus core protein 1, SPG20, KIAA0610, TAHCCP1

Target/Specificity

This SPG20 antibody is generated from rabbits immunized with a KLH conjugated synthetic peptide between 491-519 amino acids from the C-terminal region of human SPG20.

Dilution

WB~~1:1000

E~~Use at an assay dependent concentration.

Format

Purified polyclonal antibody supplied in PBS with 0.09% (W/V) sodium azide. This antibody is purified through a protein A column, followed by peptide affinity purification.

Storage

Maintain refrigerated at 2-8°C for up to 2 weeks. For long term storage store at -20°C in small aliquots to prevent freeze-thaw cycles.

Precautions

SPG20 Antibody (C-term) is for research use only and not for use in diagnostic or therapeutic procedures.

SPG20 Antibody (C-term) - Protein Information

Name SPART ([HGNC:18514](#))

Function Lipophagy receptor that plays an important role in lipid droplet (LD) turnover in motor neurons (PubMed:[37443287](#)). Localizes to LDs and interacts with components of the autophagy machinery, such as MAP1LC3A/C proteins to deliver LDs to autophagosomes for degradation via lipophagy (PubMed:[37443287](#)). Lipid transfer protein required for lipid droplet degradation, including by lipophagy (PubMed:[38190532](#)). Can bind and transfer all lipid species found in lipid droplets, from phospholipids to triglycerides and sterol esters but the direction of lipid transfer by spartin and its cargos are unknown (PubMed:[38190532](#)). May be implicated in endosomal trafficking, or microtubule dynamics, or both. Participates in cytokinesis (PubMed:[20719964](#)).

Cellular Location

Cytoplasm. Midbody. Lipid droplet Note=Transiently associated with endosomes (PubMed:[19580544](#)) Colocalized with IST1 to the ends of Flemming bodies during cytokinesis (PubMed:[20719964](#)).

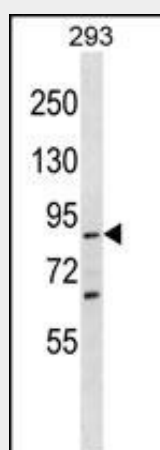
Tissue Location

Ubiquitously expressed, with highest levels of expression detected in adipose tissue

SPG20 Antibody (C-term) - Protocols

Provided below are standard protocols that you may find useful for product applications.

- [Western Blot](#)
- [Blocking Peptides](#)
- [Dot Blot](#)
- [Immunohistochemistry](#)
- [Immunofluorescence](#)
- [Immunoprecipitation](#)
- [Flow Cytometry](#)
- [Cell Culture](#)

SPG20 Antibody (C-term) - Images

SPG20 Antibody (C-term) (Cat. #AP16276b) western blot analysis in 293 cell line lysates (35ug/lane). This demonstrates the SPG20 antibody detected the SPG20 protein (arrow).

SPG20 Antibody (C-term) - Background

SPG20 is a protein containing a MIT (Microtubule

Interacting and Trafficking molecule) domain, and is implicated in regulating endosomal trafficking and mitochondria function. The protein localizes to mitochondria and partially co-localizes with microtubules. Stimulation with epidermal growth factor (EGF) results in protein translocation to the plasma membrane, and the protein functions in the degradation and intracellular trafficking of EGF receptor. Multiple alternatively spliced variants, encoding the same protein, have been identified. Mutations associated with this gene cause autosomal recessive spastic paraplegia 20 (Troyer syndrome).

SPG20 Antibody (C-term) - References

Hooper, C., et al. BMC Biol. 8, 72 (2010) :
Milewska, M., et al. J. Neurochem. 111(4):1022-1030(2009)
Tsang, H.T., et al. Hum. Mol. Genet. 18(20):3805-3821(2009)
Edwards, T.L., et al. Biochem. J. 423(1):31-39(2009)
Eastman, S.W., et al. J. Cell Biol. 184(6):881-894(2009)